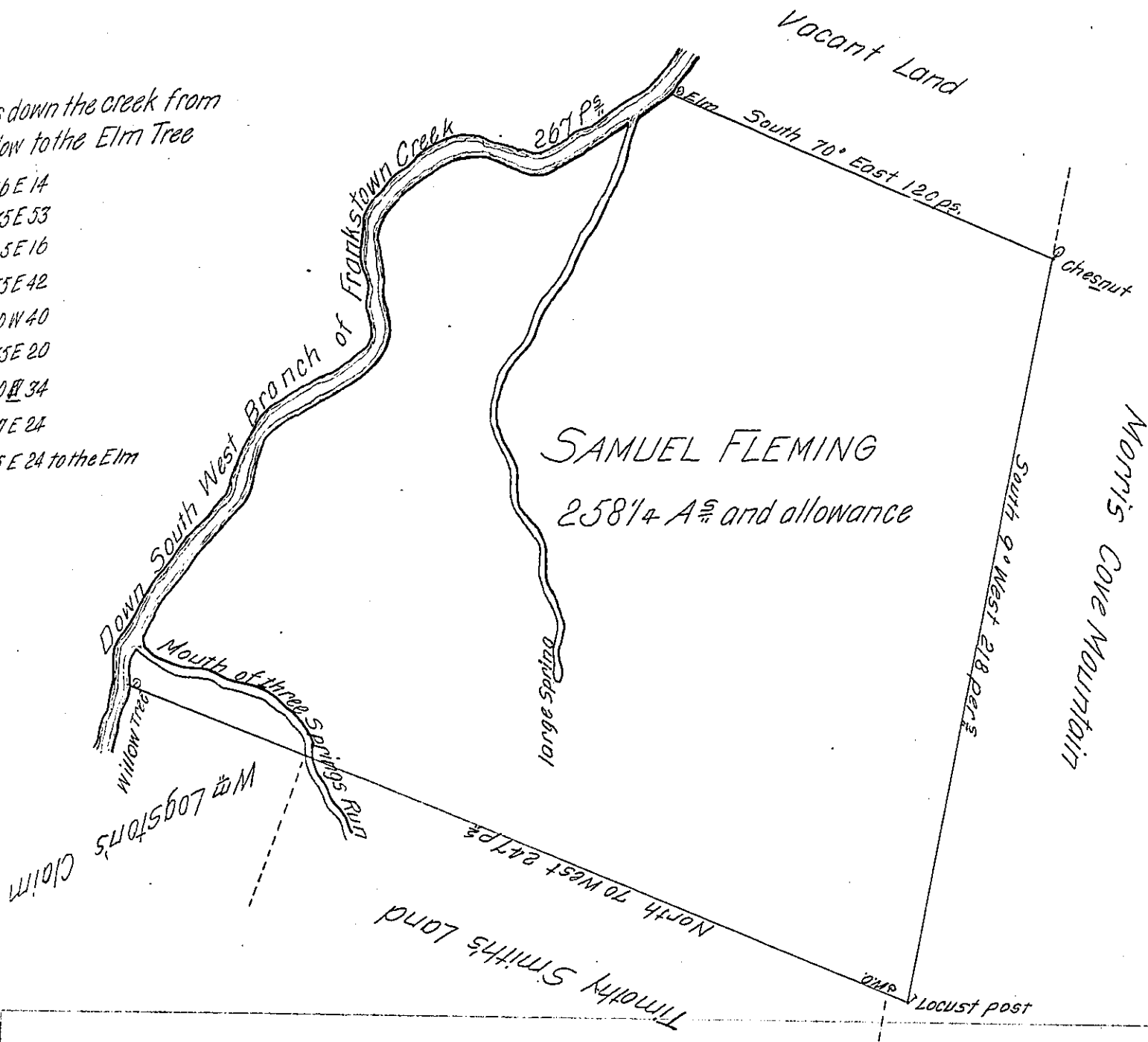


Courses down the creek from the Willow to the Elm Tree

- N 16 E 14
- N 35 E 53
- N 25 E 16
- N 55 E 42
- N 10 W 40
- N 35 E 20
- S 80 W 34
- N 57 E 24
- N 55 E 24 to the Elm



A Draught of a Tract of Land situate on the East side of the South West branch of Frankstown Creek at the Mouth of the Three Springs Run in the County of Cumberland containing Two hundred and fifty eight Acres and one quarter and the usual allowance of six acres P.C. for Roads and Highways. Surveyed the 20-day of May 1765 to Samuel Fleming in pursuance of a Warrant dated the 31-May 1762.

To John Lukens Esq.  
Surveyor General

P. Richard Tea Depy Surveyr

IN TESTIMONY that the above is a copy of the original remaining on file in the Department of Internal Affairs of Pennsylvania, made conformably to an Act of Assembly approved the 16th day of February, 1833, I have hereunto set my Hand and caused the Seal of said Department to be affixed at Harrisburg, this twenty eighth day of October 1904

*Joseph P. Brown*  
Secretary of Internal Affairs.